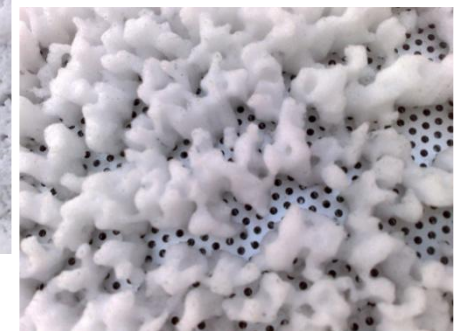


## Snow filters for ventilation systems in railway vehicles

- **robust metal filter**
- **one filter for snow, dust and water**



### Snow filters for railway vehicles

#### Description

In winter 2009/2010 some technical problems in rail traffic came up. In whole Europe trains had to stop at half distance or only could continue driving with reduced power, because the penetrated snow had put electronic components or the traction motor out of operation.

The most famous example is the Eurostar, which got stuck in the English channel several times.

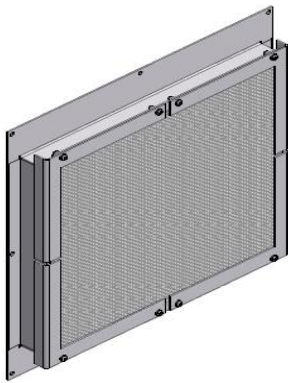
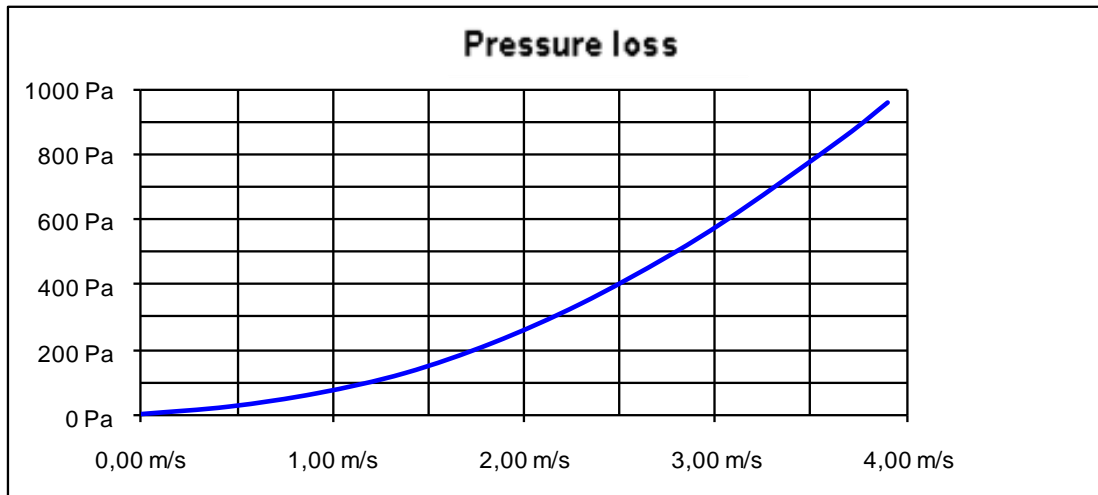
The filtration of snow is very difficult because there could be a thousand of very different snow crystals, which can change within

seconds from one crystal type into another depending on climate conditions.

The goal is to prevent the penetration of snow into the railway vehicle, but not to block the fresh air and exhaust air ducts with snow or ice.

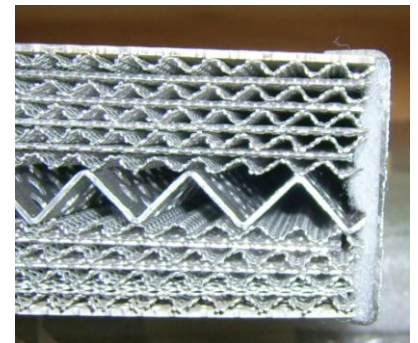


## Technical Data



Beside our solution ventilation grille in combination with a filter mat we offer metal filters which protect the air inlet not only against snow, but also against water and dust. The metal filters are designed of a very sturdy, water resistance, aluminium metal mesh (16 layers), bordered into an aluminium frame.

Filtration class dust DIN EN 799	G2
Initial pressure loss at 1 m/s	80 Pa
Mean degree of snow separation	85 %
Mean degree of water separation	95 %
Mean degree of dust separation	67 %



Like in a ventilation grille the airstream has to pass many curves. The curves arrange the separation of snow and dust particles and water drops.



Our filters protect from ...

- ... pressure shocks
- ... dust
- ... water
- ... snow

Pressather Str. 157  
 D - 92637 Weiden i. d. OPf.  
 Phone: + 49 (0)961 / 6 34 84 - 50  
 Fa.: + 49 (0)961 / 6 34 84 - 54  
 e-mail: [contact@krapf-lex.de](mailto:contact@krapf-lex.de)  
**[www.krapf-lex.de](http://www.krapf-lex.de)**